

Lauderdale Community Council Meeting, 14<sup>th</sup> October 2024

# Cross Border Connection

Gala North to Scottish Border



# Introductions

**SP Energy Network's**

**Ewan Borthwick – Project Manger**

**Marlene Marimbe – Environmental Planner**

# Who are SP Energy Networks?

# Who are SP Energy Network's?

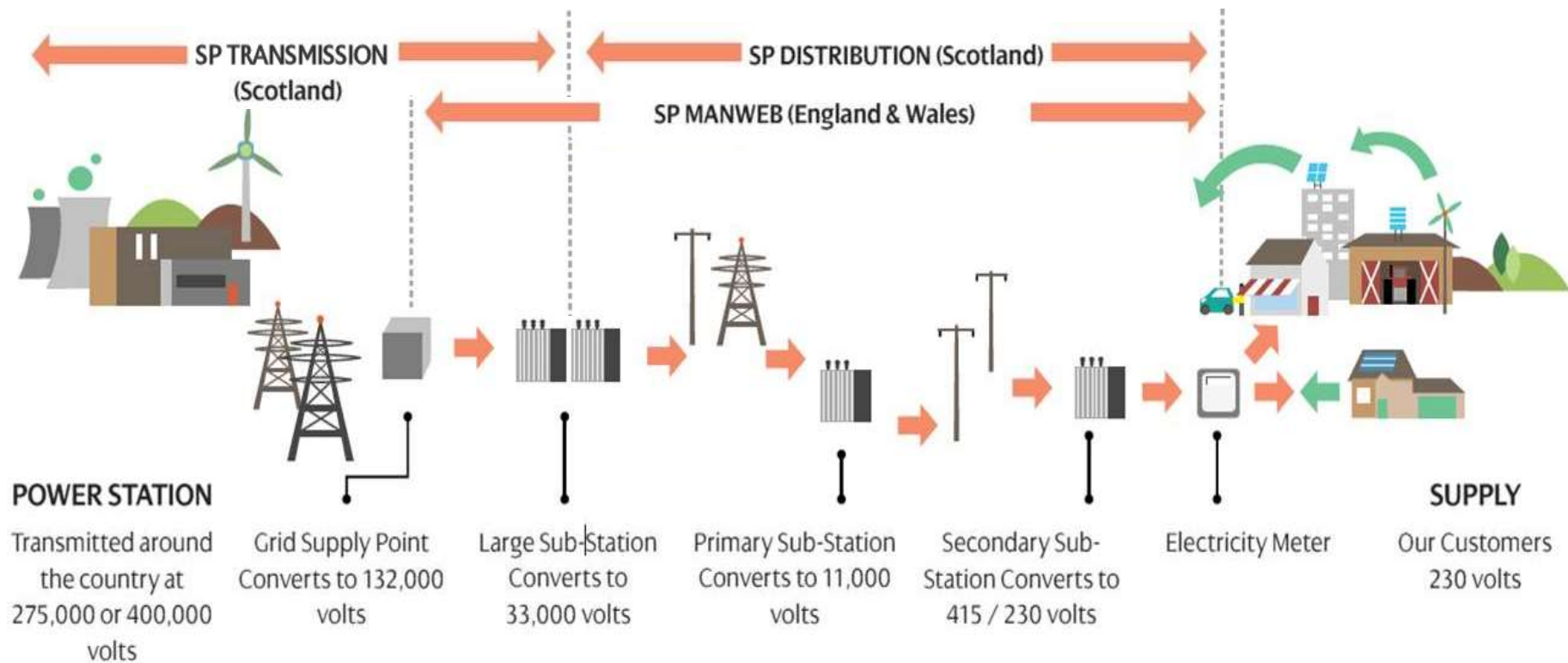
SP Energy Networks is part of the Scottish Power Group.

- We are responsible for the transmission and distribution of electricity in central and southern Scotland (through SP Transmission & SP Distribution), and, through SP Manweb, the distribution network in North Wales, Merseyside, Cheshire and North Shropshire.
- Our role is to maintain, operate and invest in our network to secure a safe, reliable, and economic service for current and future consumers.



# What we do?

We transport electricity to homes and businesses as a **Distribution and Transmission Network Operator**.



# Background & Why is the Cross Border Connection Needed?

## Background

---

By 2030, UK Government's target is to deliver 20GW of additional renewable electricity.



- Scotland is targeting that at least 50% of generation is met through renewables by 2030 for heat in buildings, transport and electricity.
- To meet these targets, we need to increase the capacity of the electricity network between Scotland and its reserves of renewable energy, and the rest of the UK.
- Scotland is committed to becoming net zero in all greenhouse gases by 2045, with England and Wales committed to net zero by 2050.

# Why is it needed?



The National Energy System Operator (NESO) recommended a series of network upgrade projects for improving the UK electricity network through its Beyond 2030 Report.

One of the areas they identified that needs network improvement is central and southern Scotland.

Reinforcing the electricity network, with new infrastructure such as the Cross Border Connection

- Reduce carbon emissions and combat climate change by delivering the electricity where it is needed most.
- Diversify the UK's energy mix.
- Reduce the UK's dependence on external energy sources and ensuring we develop a secure and reliable electrical network which meets the country's future energy needs.

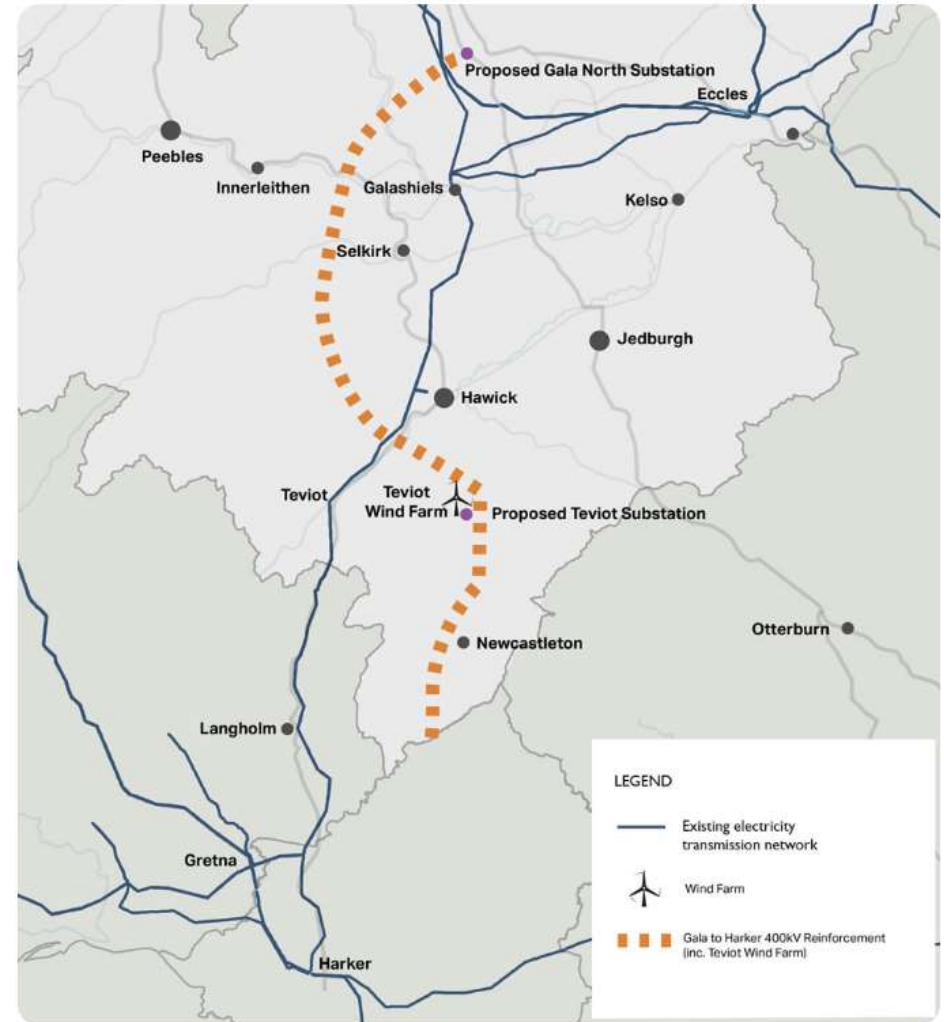


# Cross Border Connection

# Cross Border Connection

The Cross Border Connection is a joint development between SP Transmission and National Grid Electricity Transmission (NGET).

- In Scotland the preferred route runs north-south from a proposed substation in Gala North to a point at the Scotland - England border, south of Newcastleton.
- Steel towers and 400kV overhead line 75km to 85km in length.
- A proposed new Teviot substation to be located close to Whitrope.



# Cross Border Connection: Technical Elements

## Overhead Line

The proposed towers along the route will have three arms on each side, each carrying a set of conductors.

- These towers will be made of galvanised steel.
- The standard height of the proposed towers will be around 50 metres, but can go up to 61 metres where required.
- They will be placed between 200 and 300m apart.



# Cross Border Connection: Technical Elements

## Teviot Substation

The proposed Teviot Substation will be located close to Whitrope, approximately 13km south of Hawick.

- Footprint will depend on the final design and layout of its several elements.
- Specialised equipment facilitates the transformation, or ‘switching,’ of voltage levels using transformers to step up (but can step down) the voltage.





# Routing & Preferred Substation Location

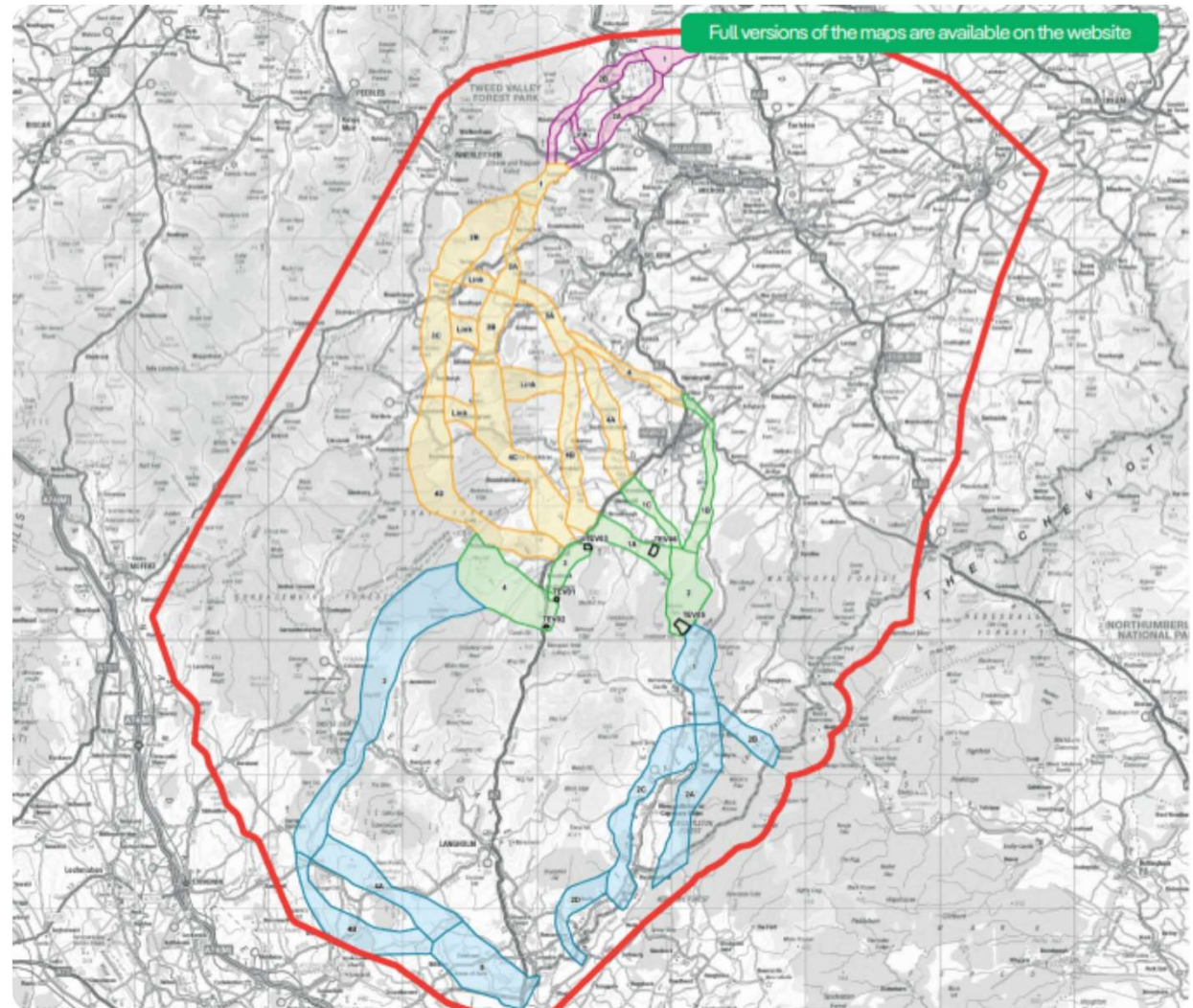
# Site Options

We compared the potential options for a route based on how they would affect key issues for local residents.

We are seeking feedback on the option that we think is the best balance between

- Technical needs
- Impact on the environment and local residents.
- Cost.

Maps and documentation available on the SP Energy Networks Cross Border Connection website.

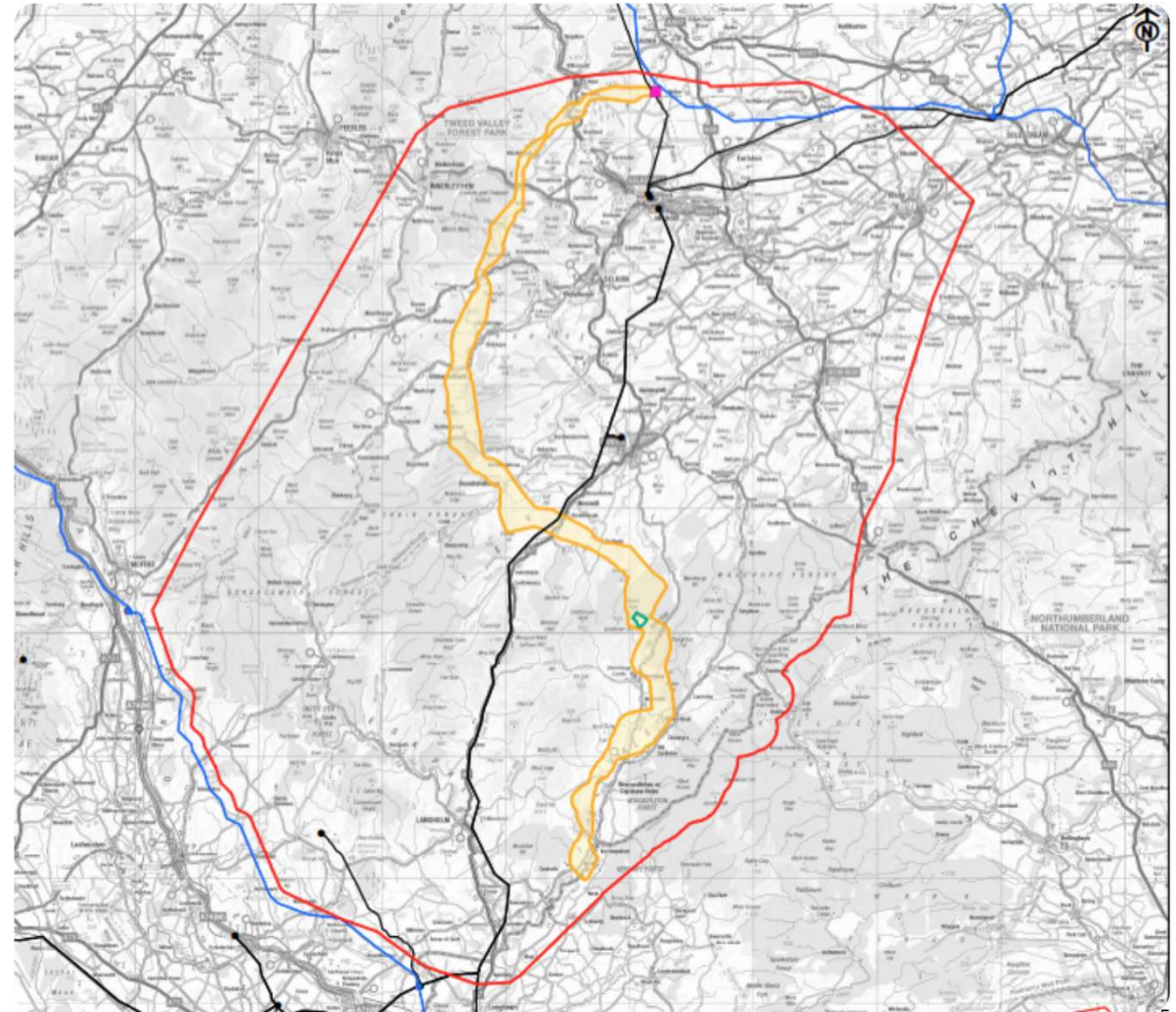


Internal Use

## Preferred Route

The preferred route option is -

- around 80km long.
- Routed southwest from the proposed Gala North Substation.
- Crosses the River Tweed approximately 6km to the east of Innerleithen.
- Continues south/southeast over the Tweedsmuir Hills and western part of Wauchope Forest
- A proposed new Teviot Substation to be located close to Whitrope.
- From Teviot Substation, the preferred option continues south on western slopes of Liddel valley to the west of Newcastleton until it reaches the Scotland-England border.



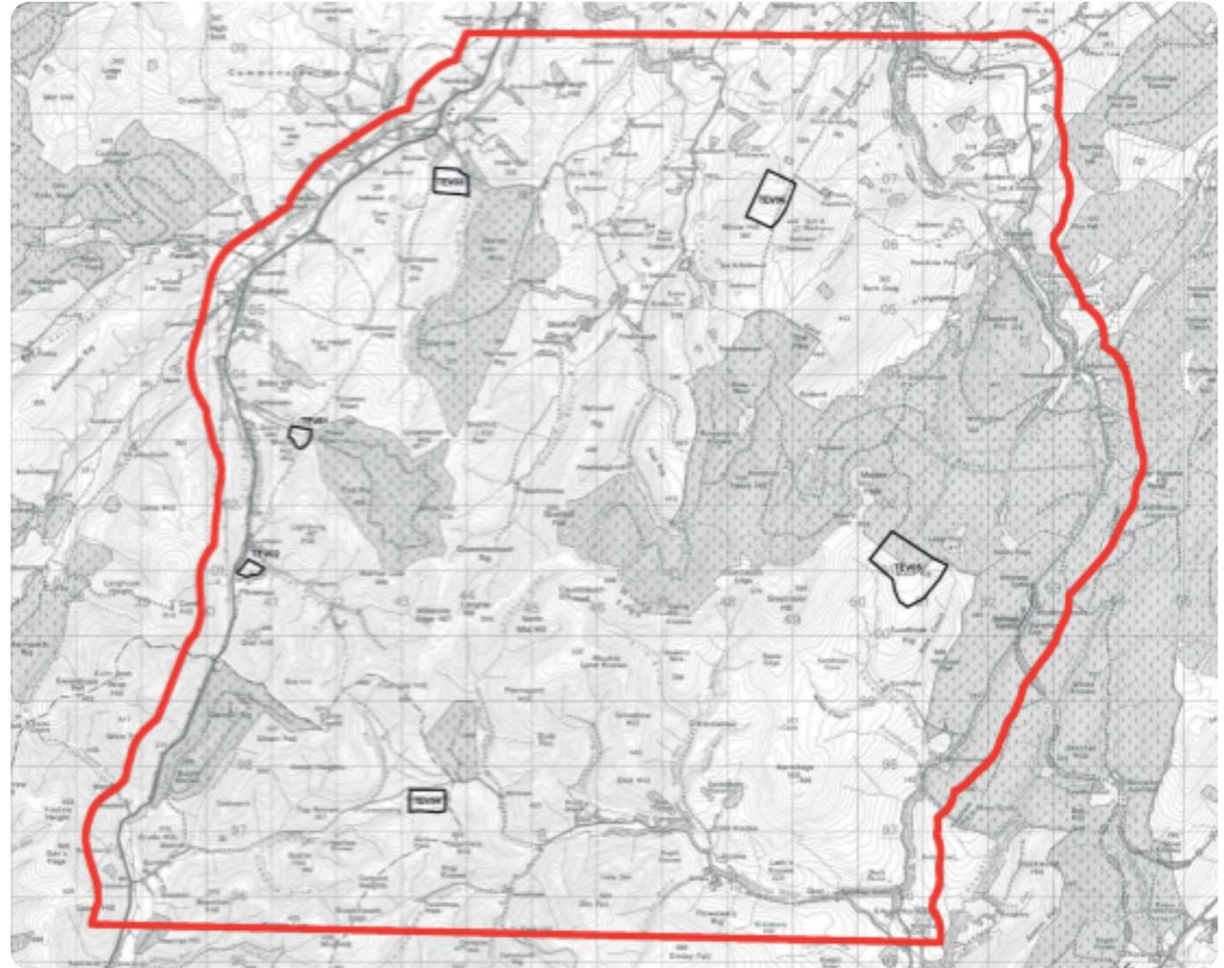


# Teviot Substation Preferred Location

In deciding where to place the substation, we found six possible locations.

Ultimately, we settled on our site choice for a balance of factors:

- It is comparatively flat which is beneficial for construction
- It is large enough to accommodate the substation without needing to move large quantities of earth, avoiding traffic pressures and disruption.
- It is close to where the power comes from, and accessible by road
- Additional commercial forestry around the site will provide screening, reducing visual impact





# Consultation, EIA & Consenting

# How will we consult?

---

- Establish consultation zones
- Identify interested stakeholders, communities and businesses
- Pre-consultation briefings for elected members
- Public consultation events, leaflets, Routeing & Consultation Document, website
- Collate feedback, identify and address emerging issues, report

# Consulting on the Cross Border Connection

We are planning two rounds of public consultation before we submit our consents applications to the Scottish Government Energy Consents Unit (ECU).

## 2024:

- Consultation with the statutory consultees on proposed routeing methodology.
- First round of consultation with key stakeholders, communities and landowners on preferred route option and alternative routes considered - 23<sup>rd</sup> Sept to 28<sup>th</sup> Oct 2024.

## 2025:

- Publish feedback on first round consultation - Q1 2025
- Scoping consultation with statutory consultees - Q1 to Q2 2025

## 2026:

- Second round of Consultation on 'development footprint' with key stakeholders, communities and landowners - Q3 to Q4 2026

## 2027:

- Publish feedback on first round consultation - Q1 2027

## 2028:

- Scottish Government consultation as part of S37 submissions - Q2 2028

# Consultation

---

Face to face events will be held at the following locations, dates and times:

**Tuesday 24th September**

Traquair Village Hall (10am-1pm) ; Walkerburn Village Hall (3-7pm)

---

**Wednesday 25th September**

Newcastleton Village Hall (3-7pm)

---

**Thursday 26th September**

Hermitage Village Hall (10am-1pm)

---

**Monday 30th September**

Lauder Public Hall (10am-1pm) ; Stow Town Hall (3-7pm)

---

**Tuesday 1st October**

Teviothead Village Hall (10am-1pm) ; Forman Memorial Hall (3-7pm)

---

**Thursday 3rd October**

Kirkhope Parish Hall (10am-1pm) ; Yarrow Hall (3-7pm)

---


**Monday 7th October**

Hawick Town Hall (10am-1pm) ; Caddonfoot Village Hall (3-7pm)



Have Your Say on the Cross Border Connection Website - [Cross Border Connection - SP Energy Networks](#)

- Feedback Form
- Phone
- e-mail



**Contact Us**

You can also share your views by  
phone on  
**020 3861 3742**

or email us at:  
[info@crossborderconnection.co.uk](mailto:info@crossborderconnection.co.uk)

Visit the project website:  
[Cross Border Connection](#) 

## Section 37 Consent

- Agree routeing methodology for project
- Undertake routeing process to identify preferred route
- Detailed design based on conclusion of first round consultation feedback
- Second round consultation on detailed design – our development footprint
- Environmental Impact Assessment undertaken on the final development footprint
- Submission of S37 application with supporting EIA Report

# Timeline

## Cross Border Connection

### Gala North to Scottish Border Project timeline



Should the project be consented in Q2 2029, construction would take place from late 2029 to the end of 2033.



# Q&A

# Q&A

# FAQ on website

